



DESIGN NARRATIVE

Strahan has a sense of place that has a simple robustness and ruggedness to it, a place that braves the extremes of climate with a history of harsh survival. Layered over this is the art deco style present in the village adding a fineness and detail as contrast.

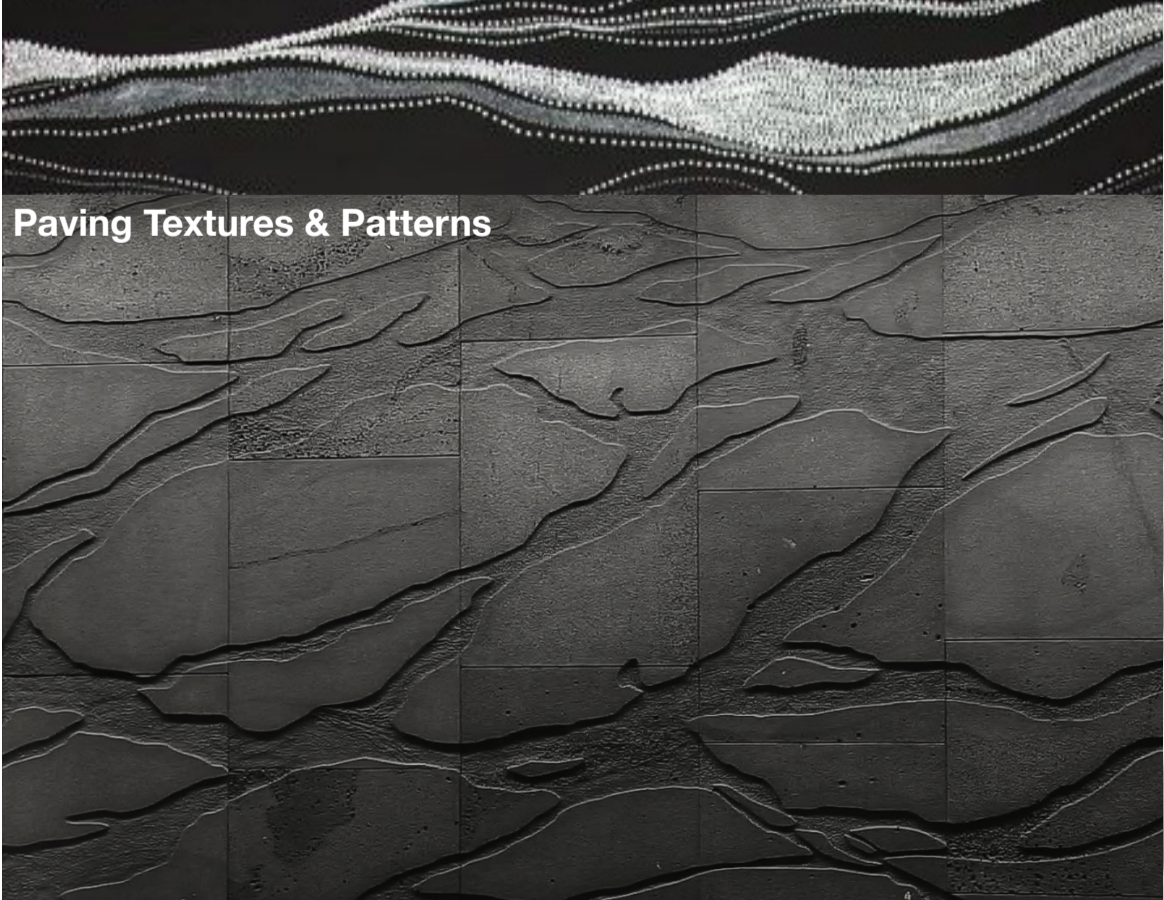
The concept aims to work with these two styles and to take the elements of fire/ wood /water and drift over the space like the wash of the sea or the knarled knots of the ancient huon pines.

With a climate that allows on average 15 clear days a year the intent is to create spaces for shelter from the elements, cosy nooks set within a larger urban space that allow viewing and relaxation in any weather. Two lawn podiums will grade down to the boardwalk with a feature structure to provide shelter from the weather and a space to retreat to in extreme weather. Interpretation of the indigenous stories and pioneering days to be layered into the surface pavement or reflected through cut steel onto the ground.



MATERIALS

A use of robust materials to represent the character of the area while also being sensible to the coastal & climatic conditions suggests a palette of corten steel, timber and concrete, while a lawn space and native plantings will allow for the softening a public space benefits from. Lighting could be especially powerful in the space and a unique element. A suite of black wind rated shade umbrellas across the site will provide a strong element that will add a smartness to the space and provide protection from the weather. It would be great to showcase the huon pine/ specialty timbers of the area in smaller elements such as seating or details in the deck.



STRAHAN WATERFRONT

Landscape Concept Plan



Entry Arches

Lighting as fire

1 ENTRY GATES

Sculptural gates at entry to waterfront, with laser cut lettering and lighting to represent fire, to symbolise Hells Gates. Continue the planting already present in front of the Ship That Never Was stage to create a uniform edge along the streetscape and introduce the wildness through the planting.

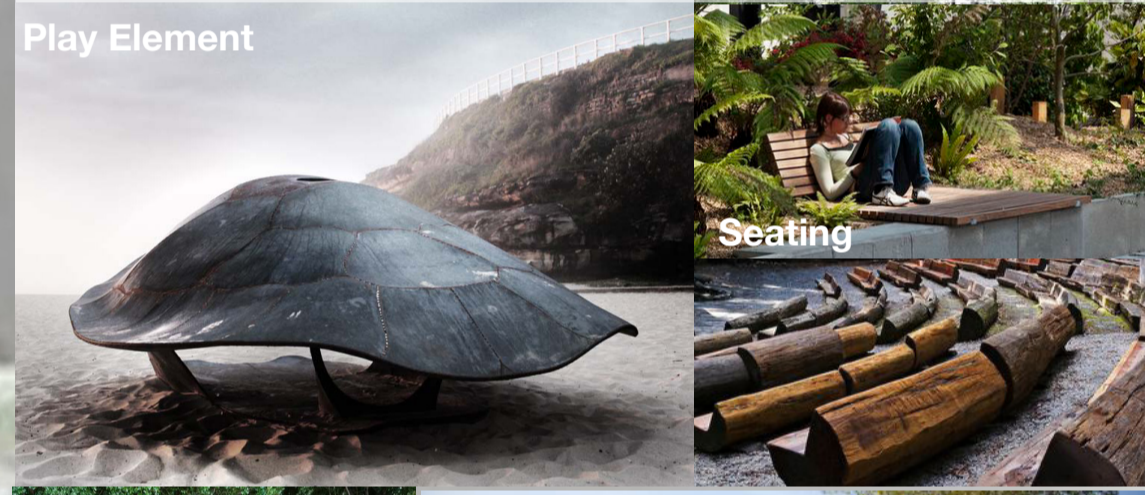
Extend deck around existing toilet building to cover underside of building and allow for movement from street around. Plant trees in culverts underneath the deck structure.

*
POTENTIAL FOCAL POINT



2 CENTRAL SPACE

Beautiful structure to buffer from prevailing winds and provide a gathering communal space. Central fire pit and raised bar around edge offering a variety of seating opportunities. Protected nooks with seats backed by garden beds and with shade/ rain protection to drift through space allowing for intimate gatherings but also catering for larger groups/ community events. Sculptural play element related to place as a feature.



Play Element

Seating

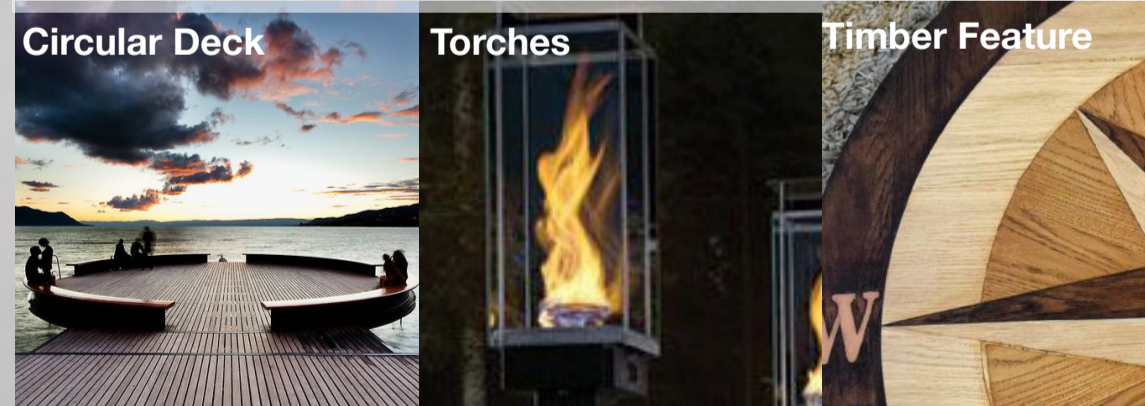


Seating Nooks

Shelter

3 VIEWING DECK

Circular feature deck in the new boardwalk highlighting the timber history of the area with balustrade to AS 4997-2005 and lighting torches along edge.



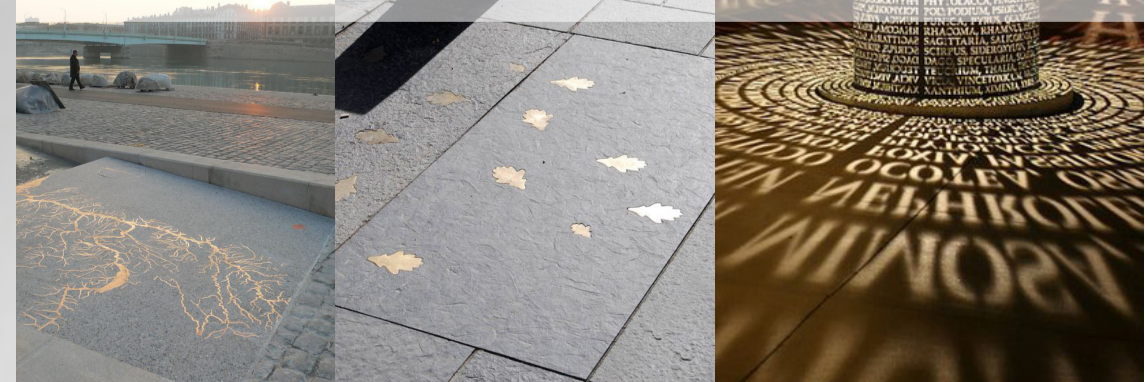
Circular Deck

Torches

Timber Feature

4 INTERPRETATION

Lighting/steel inlays on ground to tell the story of place



North
Scale: 1:200 @ A1
Note: Concept subject to engineering

